

SPU University Center

Transportation Analysis

10/27/09

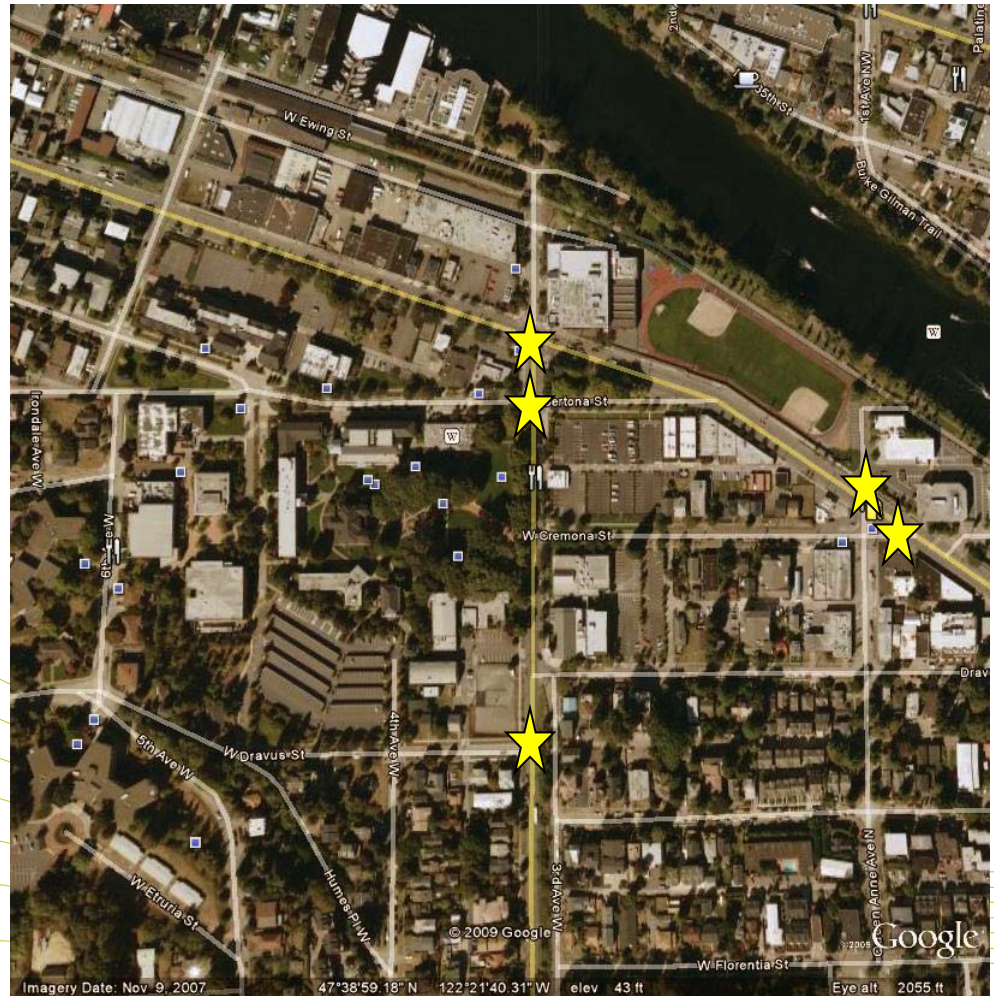
Study Objectives

- Assess impacts:
 - Traffic
 - Parking
 - Pedestrian
- Mitigation
- Relationship to the Approved Master Plan

Scope of Study

Per direction from DPD

- Study Intersections
- Scenarios
- Trip generation
- Trip distribution



PM Peak Hour

- PM Peak Hour:
 - Weekday 4:30 – 5:30 PM
- Trip Generation: 22 New Trips
- Trip Distribution: As assumed in EIS
- Result: No change in intersection operations

Trip Distribution



Intersection Operations PM Peak Hour

Intersection:	2011 Baseline	2011 With- Project
3 rd Ave W / W Nickerson	B	B
3 rd Ave W / W Bertona St.	E	E
3 rd Ave W / W Dravus Street (s)	B	B
Queen Anne Ave W / W Nickerson	F	F
Cremona St / W Nickerson	A	A

Event Scenarios

- **Events: 95% seats filled**
 - “High Activity” – Half coming from off campus, other half already on campus (resident students, staff)
 - “Maximum Activity” – 90% coming from off campus, 10% already on campus

Trip Generation

- **Event driven: high influx before/after performance**
- **High Activity Scenario:**
 - 194 in / 11 out
 - 194 out / 11 in
 - Park 205 vehicles
- **Maximum Activity Scenario:**
 - 369 in / 20 out
 - 369 out / 20 in
 - Park 389 vehicles

Parking Availability



Parking Assignment



High Activity Event
(205 cars)



Maximum Activity Event
(389 cars)

Intersection Operations

Event Scenarios

Intersection:	PM Peak Hour	High Activity		Max Activity	
		Pre-event	Post-event	Pre-event	Post-event
3 rd Ave W/W Nickerson	B	B	B	B	B
3 rd Ave W/W Bertona St.	E	D	C	E	C
3 rd Ave W / W Dravus Street (South)	B	C	C	C	C
Queen Anne Ave W / W Nickerson	F	D	C	D	D
Cremona St / W Nickerson	A	B	B	B	B

Other Intersection Considerations

- Safety

- Observations

- Photo of 3rd/Nickerson

- Photo 3rd/Dravus

Event Management Plan

- Who?
 - Transportation Event Coordinator
- When?
 - Master Calendar
 - Off campus events to off hours/days
- Where?
 - Identify parking locations
 - Communicate: website, tickets, signage to parking
 - Restrict off-campus draw events to non-school hours/days
- How?
 - Preferential parking to HOV (3+)
 - Direct folks to arterials
 - Manual assist at 3rd/Dravus if needed

Other Actions

- Propose modifications to 3rd/Nickerson to SDOT
- Work with SDOT to review on-street parking on 3rd near Dravus
- *Consider impacts of truck loading zone north of Dravus/3rd intersection*

Parking

- Parking requirements from SMC 23.54.016
 - Major Institutions
- Current Requirements
 - Requirements: 1,056 – 1,425
 - Current Supply: 1,350
 - Peak Parking On + Off Campus: 1,380
- 2013 with project:
 - 1,216 – 1,640 spaces required
 - Supply: 1,418

Master Plan Check

- Enrollment:
 - Master Plan EIS (2015): 3,410
 - Current: 3,044
 - Currently projected 2013 : 3,176
- Intersection Operations: No new problem intersections
- Performance Center: Identified in EIS (1/3 size of Master Plan)

Questions?